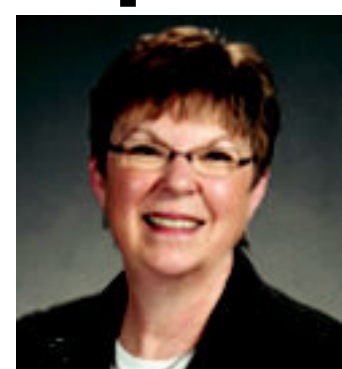




Report cites mortgages held by ESU Foundation



■ **SARAH SHAW**
STAFF WRITER

& **KELSEY RYAN**
EDITOR-IN-CHIEF

The Emporia State Foundation currently holds mortgages for five Greek houses totaling \$1.2 million, according to a report delivered to the Kansas Board of Regents last month.

The report, a management review of ESU, also said that one of the Greek houses is behind on payments and another only pays interest on the mortgage. Of the five mortgages, the largest – \$826,000 – is to Chi Omega.

“We’re not in the loan business,” said Judith Heasley, president of the ESU foundation. “So the board of trustees voted to no longer

extend loans and all of the five houses were told that there would be no more (mortgage loans). Then we informed the entire Greek community that we were no longer doing any mortgage loans, so if anybody wanted to build a new house or anything like that, they could go down the street to one of the banks or find a mortgage company.”

The other houses that hold

mortgages with the foundation are Phi Delta Theta, Alpha Sigma Alpha, Sigma Phi Epsilon and Kappa Sigma. There are 106 students living in the five houses, according to information provided by the organizations.

Another issue regarding Greek organization that was addressed concerned donations to the organizations. This was outlined in the re-

view as follows:

“In the past, the foundation accepted donations to specific Greek organizations to fund operating expenses... the foundation sought a legal opinion regarding this procedure in 2008, and it was determined that the donations to the Greek organizations would not be tax-deductible

SEE **REPORT...**PAGE 6

Glass Guild brings visiting artists, sells student art

■ **ASHLEY PEACHES**
MANAGING EDITOR

Emporia State has the only university glass blowing program in the state of Kansas. The students in the program can also participate in the Glass Guild, which offers a place for all students to appreciate the art of glass blowing.

“The Glass Guild’s main function is promoting the glass arts as a medium for artistic expression,” said Patrick Martin, associate professor of art and faculty sponsor for the Glass Guild. “We are the only (glass) program in the nearby area. So we attract students from all over the state and from the region who come here to do glass.”

The group has about 15 students, not all of which are in the glass program.

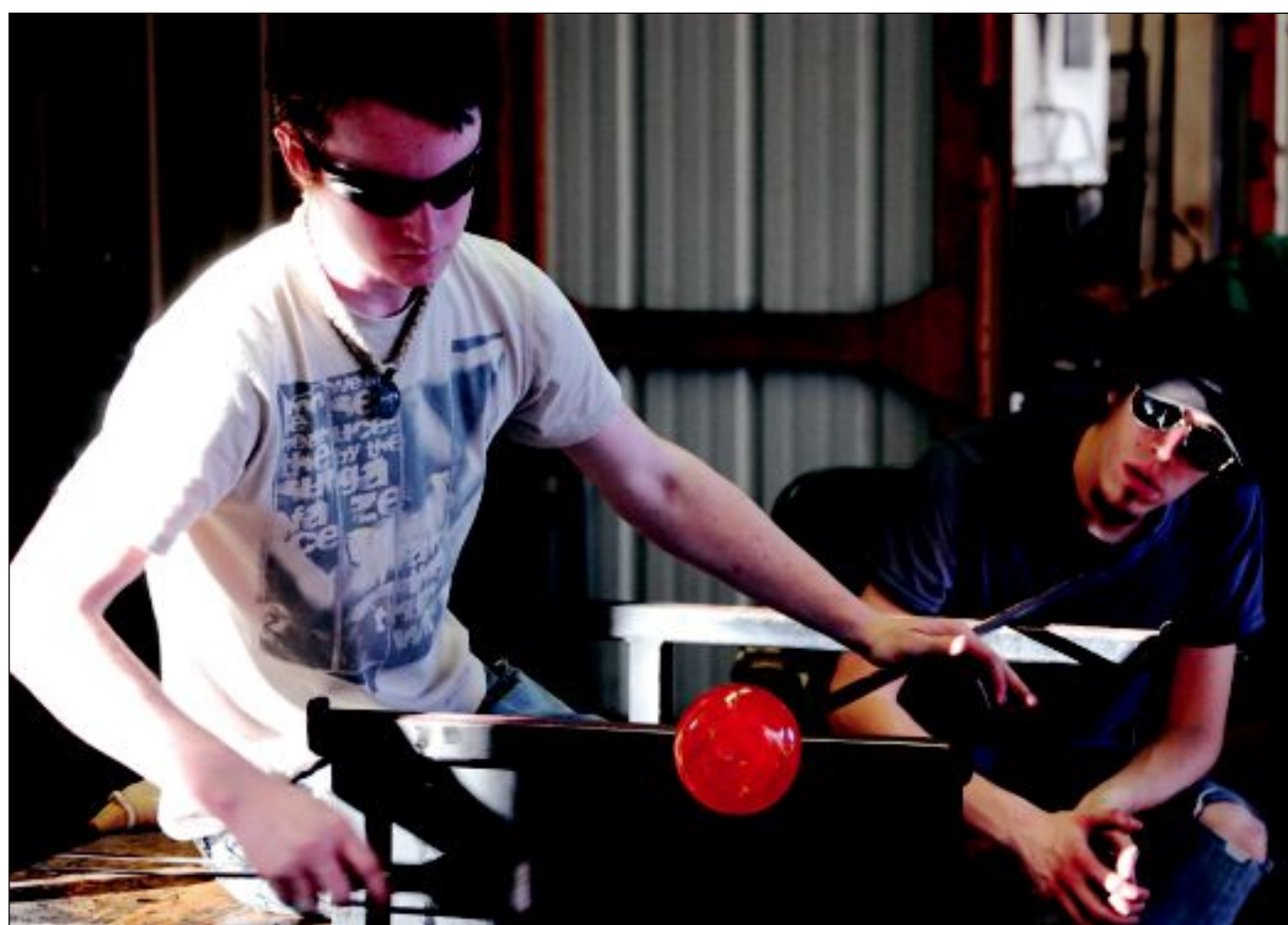
“I like being in Glass Guild because of the involvement with glass, the stuff that we do,” said Travis Ison, senior glass forming major. “Everything that goes on with Glass Guild, it’s all about the glass arts. All the money that we make in the Glass Guild, it goes right back into the art. Being that involved with something is really nice.”

Students interested do not have to have previous glass experience to join the group.

“I’ve had some other students (who aren’t glass students) who have participated,” Martin said. “We follow the rules for student organizations. But we don’t generally get a lot of interest outside of art. We have a lot of interest for our events.”

Currently, the Glass Guild is holding their annual holiday art sale. The items are all made by students and faculty.

“There will be other art items besides glass,” Martin said. “We



Sophomore glass blowing majors Addison Hanna and Joel Austin work on a piece Tuesday afternoon in the Art Annex. ESU is the only university in Kansas to offer a glass blowing program. **Giri Nam/The Bulletin.**

invite other students who want to participate.”

The items can make good Christmas gifts, Martin said. Most of the items will be \$20 or less.

“We make primarily gift items, holiday type items (for the sale),” Martin said. “We make a lot of Christmas balls, paper weights, cups, vases, bowls. They are affordable gifts for students and the community.”

The sale will run until tomorrow at 5 p.m. on Main Street in the Memorial Union.

“(Being in Glass Guild) is a good way to get involved with the program,” said Kristin Elliot, senior glass forming major and Glass Guild president. “You get the glass program out to the public and the

university.”

Each summer, students in the Glass Guild travel to the International Society of Glass Artists Conference where thousands of persons display art, host workshops, lectures and displays.

“For those conferences, all of the students will bring a piece to be in the exhibition,” Martin said. “They get their work looked at by at least 1000, other artists, students, curators, professional artists. They get a lot of exposure. Some of our student have won awards at these conferences.”

Another event that the Glass Guild holds is the annual spring blowout, which will be held April 10, 2010. The event, which is open to the public, features a visiting glass artist who offers demonstra-

tions of glass blowing and techniques.

Afterwards, glass pieces are auctioned off to raise money for the Glass Guild.

“All of the money that we make goes straight to the Glass Guild,” Elliot said. “It helps get new equipment for our shop and it helps bring the glass visiting artists in.”

In conjunction with the Art Department, the Glass Guild hosts visiting artists from around the country to demonstrate their work and talk with students.

“We bring three or four visiting artists in every year from around the country,” Martin said. “Demonstrations are open to the public, open to other ESU students. We are in an isolated area. The visiting artist program is very essential to

SEE **GLASS...**PAGE 2

No word from Lane about newspaper free speech issue

President Michael Lane still has not responded to a request for an interview about the “adversarial” relationship between his administration and The Bulletin. The newspaper has made repeated requests for an interview since Nov. 12.

Lane was reportedly angered by two staff editorials that appeared in The Bulletin earlier this semester – one on Sept. 17 that expressed concerns over banking changes at ESU and another on Oct. 1 about campus parking.

His concern was relayed through Dean Steven Brown of Liberal Arts & Sciences. Brown met with Bulletin adviser, Max McCoy, Nov. 9 and said conveyed the administration’s concern that the newspaper staff had “gone off the reservation,” according to notes taken by McCoy at the meeting and distributed at a departmental meeting.

In response, the Department of English, Modern Languages, and Journalism sent a letter supporting McCoy and the Bulletin staff to Brown. Lane has since asked to meet with the department. The meeting will be held at 3 p.m. Friday in the Flint Hills Room of the Memorial Union.

This Day in History

1818

Illinois becomes the 21st state

1967

First human heart transplant

1979

Last Pacer car produced

Source: The History Channel

SHC, NKANS raise awareness for World AIDS Day

■ **ASHLEY PEACHES**
MANAGING EDITOR

The Emporia State Student Health Center paired up with Newman Kansas Association of Nursing Students to help raise awareness for World AIDS Day on Tuesday.

However, due to budgetary cuts and the H1N1 vaccines, free HIV/AIDS test-

ing may not be happening until a later date. To get tested for HIV/AIDS, students can make an appointment at the Student Health Center, where a \$10 fee will be charged.

“When we have situations like H1N1, that’s happening now, and that kind of has to take priority,” said Mary McDaniel, assistant director of student wellness. “HIV is not going to go away

anytime soon. We may choose (to offer free HIV testing) at a later time because it’s never a bad time to do HIV awareness and HIV testing. We’re hopefully that we may be able to that later on.”

McDaniel said that HIV/AIDS continues to be a global and local issue.

“When we are at an institution of learning, it seems to be appropriate that our students would learn how to

protect their future,” McDaniel said.

NKANS members staffed a table on Main Street on Tuesday in the Memorial Union where they handed out free condoms, red ribbons, information about HIV/AIDS and services that the Health Center offers.

“It’s important to promote abstinence or safe sex,” said Ishani Akpo-SEE **SHC...**PAGE 6

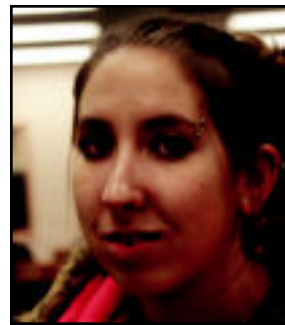
WEEKLY Q&A

Did you take advantage of the information that was available on World AIDS day? Why or why not?



“No. I just learned about (World AIDS Day) when you told me. I was on campus all day and I didn’t see anything.”

John Murphy, junior secondary education major



“No. I didn’t know about it. Did they send out an email? They could have put up signs or something.”

Amanda Archer, sophomore sociology major

Briefs

Library accepts food in exchange for fines

The William Allen White Library Circulation Desk will be accepting non perishable food items until Dec. 23 in exchange for fines students may have acquired over the semester. The food items must be unopened and not expired.

Each food item turned in will erase \$1 in fines. Food items cannot be used to pay for replacement of damaged or unreturned materials or processing fees. Up to 30 items, which would forgive \$30 in fines, will be accepted per student.

Donations will also be accepted from those who do not need to pay fines and those who wish to bring more than 30 items.

Counseling Center opens scholarship submissions

Applications for the Susan B. Anthony scholarship, which has an award of about \$1,200, are now available in the Counseling Center in 211 Morse Hall.

Criteria for the award include demonstration of input to the growth and education of women at Emporia State, excellence in scholarship and financial need.

Applications are due on Feb. 18, 2010 by 5 p.m. in the Counseling Center. Questions can be directed to Aneta Bodkin at 341-5221.

LCHS presents Holiday Homes Tour

The Lyon County Historical Society will feature a Holiday Homes Tour of historic homes in Lyon County from 6 p.m. to 8 p.m. on Dec. 5 and 1 p.m. to 4 p.m. on Dec. 6. Homes on the tour include the Calvin Newman/Gilbert Frith/Selleck Warren House, current home of the Sigma Sigma Sigma sorority, W.T. Roberts/ James Fraley House and the Otho Behymer/ Richard Hereford House.

Tickets for the tour can be purchased at the Lyon County Museum, the Lyon County Research Center, The Granada Coffee Company, The Plumb Bazaar, and the Town Crier Bookstore for \$8 in advanced. To purchase tickets during the tour, participants can go to any of the six tour homes and purchase tickets at the door for \$10.

SHC offers H1N1 vaccine to priority groups

The Student Health Center will be offering the H1N1 vaccine at two clinics to priority groups. The cost of the vaccine will be one non-perishable canned food item.

Persons in priority groups include, pregnant women, persons who care for infants, health-care personnel, persons aged 6 months to 24 years and persons over 24 who have chronic medical conditions.

Clinics are scheduled for tomorrow from 2 p.m. to 4 p.m. in the upstairs lobby of the Memorial Union and Dec. 8 from 5 p.m. to 7 p.m. in the Schillinger Lounge of the Morse Hall Complex.

Persons outside of the priority groups will be asked to wait to get the vaccine. Questions can be directed to Student Health Services at 620-341-5223.

ESU POLICE REPORTS

Nov. 29

Officer provided jump start assistance for KS Veteran 22ACC in Sector 3.

Officer checked KS XGI813 in Sector 5. Operator was in vehicle practicing her flute. No other problem was found.

Officer provided escort for a female student from Singular Hall to King Hall.

Officer provided escort for a female student from King Hall to Singular Hall.

Officer provided lock out assistance for KS 185ALW at 1325 Merchant-Heartland Apt.

Nov. 30

George Emch reported criminal damage at ESU Apt.-1201 Triplett Dr.

Officer checked welfare of occupant of ESU Apt. A-9 1201 Triplett Dr. Officer made no contact.

Parking Enforcement immobilized MO SD3R7C in Free Parking.

Jessica Brown reported a theft.

Male student requested to speak with an officer in reference to being struck by a vehicle in Sector 7. Case pending.

Officer stopped KS 303BYM at 15th and Wooster Dr. for a stop sign violation at 15th and Market. Chardae Bell was taken into custody on suspicion of driving while suspended and transported to Lyon Co. jail.

Dec. 1

Officer found handicap parking permit in Sector 4.

Parking Enforcement immobilized KS 126ARM in Lot 11.

Officer attempted to serve subject at 1201 Triplett Drive Apartment G-78.

PHA acts as voice for sororities

■ **LAUREN WALBRIDGE**
STAFF WRITER

The Panhellenic Association had their last meeting for the semester on Nov. 30. It is the governing body for the sororities and serves as a voice for the sorority community.

"Basically, it's just where we come together and try to communicate with each other about what's going on each week in each chapter and really to try to help each other recruit for Greeks as a whole," said Jayme Lindstrom, junior communications major and PHA public relations chair. "Nobody's really trying to recruit for one specific chapter, but for everybody."

PHA coordinates informal and formal recruitment, PHA intramurals and works with the Interfraternity Council to coordinate Greek Week. Junior elementary education major and PHA vice president Lauren Peel said the association promotes scholarship, friendship and leadership.

At the last meeting, new executive board members were transitioned in during the executive board meeting then the group had a traditional council meeting. Applicants submitted an application and chose which positions they were interested in from their first choice to their seventh. The old and new members did team building activities then split up with their counterparts so that old members could give advice to their replacements.

"It's kind of like a time where old executive kind of just passes the baton to new executive and we just all hung out together and it was pretty fun," Peel said.

Along with the executive board, PHA meetings include delegates who are elected from each sorority and their chosen assistants. Delegates vote on behalf of their sorority.

"The delegates are kind of like the voice for the entire chapter," Peel said.

This year, Alpha Sigma Tau did not have any representatives on the executive board. Peel said that none of them applied for the position, but this upcoming year they will have one member on the board.

"You have to apply for the position. If they don't have any of their girls apply for the position, then they won't be on the board," Peel said. "But actually this year they did have one girl apply and she is on the board for the next year."

"Letters in the Library" is PHA's last event for the semester. The sororities will try to get the most members studying in the library for the most time on Dec. 9. Peel said the event is to promote scholarship and studying for finals. The sorority with the most hours and the most people will earn a certificate.

"It's mostly just about getting bragging rights for the rest of the semester," Peel said. "Just knowing that you won and then that you studied the most and knowing that you're probably



Jayme Lindstrom, junior communications major and PHA public relations chair, speaks about her experiences with The Panhellenic Association Tuesday afternoon in the William Allen White Library. PHA works to coordinate events between the sororities of ESU and also acts as the official voice of the sorority community.

Giri Nam/The Bulletin.

going to do the best on your finals is probably enough."

Lindstrom said she enjoys being a part of Greek Life and PHA at Emporia state because the Greek system is more laid back. She said that being a

part of PHA was a really positive experience.

"It's nice when somebody says 'Oh, you're a sororistute,'" Lindstrom said. "I'm like 'It's different. It's fun to break that stereotype.'"

Glass..from page 1

visiting artist program is very essential to the glass program in that they get to meet other artists. There is a lot of assisting and collaborative type work"

Artists Jenny Pohlman and Sabrina

Knowles will be the first visiting arts of next semester. They will hold demonstrations and work with ESU students from April 6- April 10.

"We bring the glass artists in that go to the art forum," Elliot said. "That is some-

thing that the whole art department is required to go to so it really benefits the whole department and not just us."

The art annex is located on Highland Street one block north of the Sauder Alumni Center.

FLINT HILLS LANES PRESENTS:

Wednesdays

CHEAP NIGHT

\$1.50 WELLS

\$5.00 COVER

10-12PM

Come Visit us for:

Custom Screen Printing
Plaques, Trophies & Awards
Unique Gifts for all Occasions
Personalized Engraving
Sports Apparel
Wood Cuts
Photo Engraving or Marla,
Gears and Wine
Glass Engraving
Custom Ornaments
and More

Emporia's store for Personalized Gifts!

ESU Students, Faculty & Staff Save 10% on in stock ESU Merchandise by showing us your Personal card or ID.

www.FlintHillsLanesExpressions.com

Club Orleans Emporia

"Emporia's Hottest Gentleman's Club"

900 Graphics Arts Rd.

Monday - Saturday 6pm-2am \$2 Specials

Monday - Coors/Coors Light
Tuesday - Bud/Bud Light
Wednesday - Miller/Miller Lite
Thursday - Wells

College Night- Monday
\$5 off door cover with college ID

Now Serving Food

WHEAT STATE PIZZA

Gourmet Pizza, Superior Taste!

1120 Commercial St.
Open 11am - 10pm
Monday thru Thursday
11am - 11pm
Friday & Saturday

STUDENT SPECIALS!

\$6.99 Large One-Topping Pizzas!

\$4.99 All you can eat Pizza Buffet, Salad Bar & Drink!

Tuesday Buffet- Buy 1 get 1 half off!
must mention deal when ordering

620-342-8200

WHEATSTATEPIZZA.COM

Brown's SHOE FIT CO.

Brings ESU **UGG** australia

Classic Tall
Black
Chocolate
Chestnut
Bomber Brn.

Classic Short
Grey
Chocolate
Black
Sand
Chestnut

Cove
Toast
Black

BEARPAW Boots Available

Save 10% or \$5 off sale & red tag Items!

STUDENT DISCOUNT CARD
STUDENT ID REQUIRED

UGG danskoasics D.F. 10% OFF

Merrell smartwool KEEN

Brown's SHOE FIT CO.

6th & Commercial - M-F 9-6 - Thurs till 7 - Sat 9-5:30 - Thru May 2010

Faculty Profile: Kim Simons, science and travel - the best parts of life



SIMONS

■ **SARAH SHAW**
STAFF WRITER

With a broad range of interests and experiences, Assistant Professor of Biochemistry Kim Simons has a lot to offer students.

Simons has a degree in biochemistry with a minor in computer science from the University of Dallas and lived in Texas, Seattle, Boston and Pennsylvania before coming to teach at Emporia State. He is originally from Hays.

"The university I was at didn't have much potential for research," said Simons. "There wasn't a graduate program and here there's just room to grow, room to do more."

Though this is his first year teaching at Emporia State, Simons has already begun research on the process of mitosis using yeast cells which he said have a similar mechanism that causes the cell to divide, but are much more easily manipulated than human cells.

"What we hope to know is what proteins are responsible, what genes are responsible, how is that regulated," Simons said. "So it's sort of a very basic science question - how does it work? If we understood more of how a cell divides, we could understand more about how a cell divides improperly."

Because biologists have researched the process of mitosis, Simons said there is now enough information to begin exploring it as a chemical process.

"It was an area that had been studied well genetically," Simons said. "Now it's ripe for a biochemist, it's ready for chemistry and biochemistry, and that hadn't been done yet, so I saw it as an open area."

Junior chemistry major Richard Stephenson is one of four students assisting in Simons' research.

"It's very enjoyable, he's very intelligent and very patient," Stephenson said. "I always learn a lot from him. Every time I go in, I learn something new."

Simons also enjoys the small class sizes at ESU.

"I know with the economy they're trying to have larger class sizes and get more out of money, but I really think the best thing for students is to have individual time with professors," Simons said. "My largest class is 15. I've been blessed. I get to speak with juniors and seniors one on one. There's a lot of interaction. That's what I enjoy."

Outside of the classroom, Simons explores many interests and spends the bulk of his free time with his family. He has two young children, ages four and six.

"I have a full time job and I'm a full time dad," Simons said. "I really enjoy hiking and being outside and now that they're getting older and can walk on their own we're returning to doing more swimming and outdoors things."

His family was a motive to return to Kansas for a variety of reasons, one being that both he and his wife have family here.

"I really liked the big city," Simons said. "I would love to live in New York or Boston, but it's extremely expensive, with kids it was just very difficult."

His experience living in different places is one that he encourages others to seek.

"What I always suggest to my students, because often you go to a college that is nearby, I'd like to encourage them, even if it's just for two or three years, go out," Simons said. "You can always come back, things won't change that much, but get out, get a different experience, a new perspective, and come home. You'll be enriched because of it."

If you have a suggestion for a profile, please call 341-5201 or email us at news@esubulletin.com.

HIGH ON TASTE
And
6 GRAMS OF FAT OR LESS!

CHOOSE FROM THESE REGULAR 6 INCH SUBS:

- Oven Roasted Chicken Breast
- Black Forest Ham
- SUBWAY CLUB™
- Roast Beef
- Turkey Breast & Black Forest Ham
- Sweet Onion Chicken Teriyaki
- VEGGIE DELITE™
- Turkey Breast

SUBWAY
eat fresh.

\$5 REGULAR 6" FRESH VALUE MEAL
Includes a regular 6" sandwich, 21 oz. drink and chips.
Expires: 12/10/09

Offer excludes DOUBLE STACKED™ and Premium subs. Excludes double meat or cheese. Not valid with any other offer. One coupon per customer. No cash value. Not for sale. ©2009 Doctor's Associates Inc. SUBWAY™ is a registered trademark of Doctor's Associates Inc.

SUBWAY

Ru Yi Restaurant
- Emporia -

Located at
1113 Commercial St.
Call: 620-340-0033/620-340-0555
Carry Out/ Dine In

Korean Food Available

10% off
Restaurant
w/ coupon

Expires: 12/10/09

WILLIAMS AUTOMOTIVE
WE MEAN IT WHEN WE SAY **FULL SERVICE**
3305 West 6th Avenue Emporia, KS 620-343-0086
www.williamsautomotive.net

24/7 Emergency Road Service
10% DISCOUNT WITH STUDENT ID
DIRECTIONS: TAKE 12TH TO INDUSTRIAL ROAD. TURN LEFT AND GO TO WEST 6TH AVE. TURN RIGHT ON WEST 6TH. GO 15 BLOCKS. WE ARE ON THE LEFT

i'm lovin' it

- 10% off on Sundays, 2 p.m. - Midnight with Student ID
- Good only at the West 6th location

Hugh O'Reilly, owner

FHCHC Medical and Dental Services

- Quality Medical and Dental Care
- Sliding Fee Scale

• Providing Care for Everyone With or Without Insurance

www.flinthillshealth.org
(620) 342-4864

420 W. 15th Ave
Emporia

Free Transportation for Anyone in Emporia

YOUR **MONEY** YOUR CHOICE

EMPORIA STATE FEDERAL CREDIT UNION

310 West 12th
342-2336
esfcu.com

MAKE THE CHANGE.

CHECK IT OUT!
ESUBULLETIN.COM

- Just 2 blocks west of campus!
- ATM on 12th Street!
- FREE CHECKING!

Let's say YOU'VE DECIDED TO GO HOME FOR THE summer.

And let's just say home is near BUTLER COMMUNITY COLLEGE. You've thought about taking summer courses. Because you don't want to be in school for 7 years. And let's say you need those classes to transfer. And, more importantly, say you haven't found a cash-for-clunker plan for your school bill.

Say you decide to enroll at Butler over your Winter Break. Say it's **half the cost** of what you're paying now.

Well...I'd say you've got this **POWER** thing figured out.

Visit www.pureearningpower.com for hours and information.

Butler Community College
Pure Learning Power

316-322-3255 | butlercc.edu

ENROLL FOR SUMMER DURING YOUR winter break

Cultural divide exists among ESU students

The Office of International Education recently celebrated International Education Week on campus. Like most events we see at Emporia State, it was a collection of events and activities with a strong message and great intention. But, also like most ESU campus events, it was under advertised and under supported by the rest of the school.

College is a time for new experiences – a time to live on your own, take challenging classes and explore new ideas. Probably the most important aspect of the college experience is getting to meet new and interesting people, those who are different from what you are used to.

At ESU, we have the opportunity to meet people from all walks of life. Even more so, we are lucky to have such a strong number of international students who have traveled all over the globe to attend school here in Kansas. Many of these students have scrimped and saved their money to get to America in order to experience something new and wonderful and meet lots of interesting people along the way.

The only problem is some of them are being cheated

of that experience. The international students have remained for the most part segregated from the rest of the campus and the American students. They live on dorm floors regulated strictly

neglect from the administration and the student body, both American and international.

Our campus should strive to do more to welcome international students and help

for international students is that they are often times all put on the same floor, with roommates that are also international students. Though this makes sense for a variety of reasons, it also takes

responsibility should fall on us, the students of ESU, to go out of our way to welcome our international classmates. Imagine being in their shoes – half-way around the world in a strange new country, with no friends or family. You might not even know the language everyone else is speaking. Wouldn't you want to meet some friendly people who could show you around?

When relationships are formed with international students, everyone involved stands to learn a great deal about the world around them. Not only will you learn about their country, its history culture and people, but you'll be helping teach your own country's history to another, and in the process you might gain new appreciation for things you used to take for granted. They say that teaching is the best way to learn something yourself, so through the act of helping others understand our country, you could do it, too.

And most importantly, you'll be making new friends. And that's something that can stay with you long after college has ended.

-The Bulletin staff



ILLUSTRATION BY JUHYE BAK/THE BULLETIN

for them and spend a majority of their time with other students of their own nationality. There is little interaction with American students or the ESU faculty.

The divide that exists is not any one groups' fault. The lack of cultural interaction is the result of a mutual

them feel more comfortable right off the bat. There are a handful of welcoming events that are scheduled at the start of each semester; they could be emphasized more by the campus and attended more heavily by the student body.

Another big roadblock

away from their experience in America. Many of the international students would prefer to live with an American student: someone who can help them acclimate to their new home and learn in depth about American culture and everyday life.

Above all else, more re-

This Christmas, shop local and shop smart

Now that December has started, the holiday season is here with its usual annual fury. Black Friday was as hectic and as crowded as ever. But this year, some things were different. Our country is still steeped in the worst recession in the past 60 years.

Though our economy is trying to recover, Americans all over the country are feeling the effects of a tightened budget. In tough financial times such as these, sacrifices unfortunately must be made to ensure stability in the future.

So how does this relate to you? As college students, most of us are already living on a tight budget. But when the holidays arrive we are expected to give gifts to our friends and family. So we have to find ways to purchase gifts without losing an arm and a leg.

When the national economy takes a hit, the fastest way to see recovery is to start small and to start local. Before you begin your shopping quest, check around town to see what kind of businesses are present in your community.

When you spend your money in a locally-owned business, especially in

the quantities present during the holiday season, you can be sure that money will stay local. Business owners will use that money to invest and expand, to provide a better product to the community.

It is easy and tempting to save your shopping for when you go out of town, so you can hit up a big box store.

They offer incredibly low prices and the convenience of one stop shopping. What they do not tell you is the effect their large multi-national chains have on the economy.

Stores like Wal-Mart and Target can run everyone else in town out of business, and then once the competition is gone, jack up the prices to whatever

they want. Even online stores such as Amazon and eBay do little to invest in local communities. Because the transaction is done

entirely over the internet, your local economy does not see a penny of your purchase.

Emporia is full of great businesses that provide wonderful gift opportunities. The Sweet Granada offers a ton of chocolates and candies that would make a great gift for relatives or coworkers. Flint Hills Laser Expressions can write just about anything on any item you bring in – from a bottle of wine to lettering on a jacket. And who wouldn't enjoy a gift certificate to one of our fine restaurants in town? These are just some of the many choices that you have

when you decide to shop locally first.

When you shop locally, it also makes it that much easier to shop subtly. Walking the aisles of a big-box store, it is easy to convince yourself you need to buy someone something big and flashy, like a giant television or a digital camera. But gifts that come from the heart, with real meaning attached, can really drive home the true message of the holidays.

Last year, my mom's Christmas list was full of high dollar items. Being broke, I knew I could not afford any of those so I decided to get creative. I commissioned a friend of mine who was an art student at ESU to draw a portrait based off an old photo of my siblings and I. All in all, it cost me \$10 plus the frame. My folks said it was the nicest gift they have ever received from me.

I guess it just goes to show that the best gifts don't have to come from a big store. They can be simple and subtle, and most importantly, cheap, as long as they have a strong message behind them.



HARRISON GEORGE
OPINION EDITOR

Texting and driving still do not mix for student

I am sure most of us have done it. Answered a quick phone call or returned a short text while driving. I used to do it all the time. Even though I heard about cell phone-related accidents and even deaths, still for some reason I felt I was invincible – that something serious would never happen to me because I am a superb multi-tasker.

Well that feeling of security came crashing down – literally – this summer. There had been a few close calls in the past where I almost rear-ended a car because I was distracted by texting, but luckily I have amazing brakes and an innate ability to know the precise moment to swerve to avoid the bumper in front of me.

This summer, however, was another story. I was driving home from work one night, playing on my new phone (thanks, Facebook) when I looked up and all I saw was the pale green of a new Volkswagen. I stomped the brakes and my tires screeched as they had so many times before, but this time I did not have enough time to swerve or even stop (even though I was only going about 30 mph) to avoid a collision.

The Volkswagen in turn tapped the minivan in front of it. We all pulled into a Taco Bell parking lot to make sure ev-

everyone was okay. Minivan guy was fine and he left. Volkswagen and I exchanged phone numbers so we would not have to file a police report.

I thought I was off the hook since there was not really any visible damage and Volkswagen and I agreed he would take his car in for some estimates and I would pay the cost out of pocket.

About 20 minutes later, everything began to snowball. He called me to say his hood would not open and something was leaking so we exchanged insurance information. This was my first time being in trouble with the insurance guys and I was terrified. My rate has yet to go up but I know it is only a matter of time and who knows how expensive it will be then.

According to a Virginia Tech Transportation Institute study conducted this

summer, people who are texting and driving are 23 times more likely to crash or be in a near-crash situation than undistracted drivers.

The study noted that the average time someone's eyes are away from the road while texting is 4.6 seconds. This, they say, is essentially the same as traveling the distance of a football field at 55 mph blindfolded. I can not think of anyone who would drive with their eyes closed for nearly five seconds, which is basically the same thing, so why do people still text?

The study also noted that texting while driving is one of the most dangerous activities one can do behind the wheel and its dangers rival those of driving while drunk.

Steven Yantis is a cognitive psychologist and professor at Johns Hopkins Uni-

versity and is an expert in the area of multitasking. He states that when your attention shifts toward one thing (like texting) it shifts away from another (like the road).

Yantis states that most people think they are better at multitasking than they really are, and that's because most of the time, errors have no consequences. But when you are operating a potentially deadly machine – like a car – one small error could end up disastrous.

I know it seems harmless to answer a text, but it is slightly safer to place a phone call if you have to. The ideal situation would be to wait until you are not driving to use your phone. Think about it – if you were in an accident – either a fender-bender or a car-totaller – is that text message worth it? I know if I could go back, I would have waited until I got home to play with my new phone.

Because of my accident, I do not text and drive anymore. If someone is in the car with me I simply ask them to type for me. If it is too important to wait, I make a call rather than text. No message could possibly be more important than my life, or the life of someone else.



BRIANNA VANSCHOELANDT
OPINION WRITER

Letter to the Editor

Dear Editor:

An article about printing appeared in The Bulletin which needs to be corrected. It is not the responsibility of the University Libraries to provide printing for the campus. The University Libraries subsidizes printing for students out of its materials budget. This is the budget which buys books and electronic databases for university use. There is no budget for printing nor do students pay any fee which covers printing in the University Libraries. As a result, we instituted charges last year for multiple copies and for more than 25 pages.

Because the University Libraries believes that research material needs to be made available to students as widely as possible, we have subsidized printing costs for many years. However, if there continue to be severe budget cuts, it will be impossible for this policy to continue. Paper and toner are very expensive. At this point, we intend to continue to subsidize printing. There are a couple of ways that students can help. One is to be careful to print only what they need and therefore not waste paper and toner. Another is to download relevant articles onto thumb drives or email the material to their email addresses.

With the help of the students, the University Libraries will be able to maintain free printing.

Thank you,

Joyce N. Davis, Dean
University Libraries & Archives

Letters to the editor should be no more than 350 words and can address any issues, concerns, ideas or events you choose.

Letters may be edited. To submit, email your letter to editor@esubulletin.com. Be sure to include your name in case we have any questions and your student email so that we can verify the author.

THE BULLETIN Editorial Staff

Fall 2009

Kelsey Ryan
EDITOR-IN-CHIEF
Ashley Peaches
MANAGING EDITOR
Kimber Mitchell
DESIGN EDITOR
Harrison George
OPINION EDITOR
Shane Wilson
SPORTS EDITOR
Kellen Jenkins
PHOTO EDITOR
Juntao Liao
ONLINE EDITOR
Quincy Peaches
OFFICE MNGR.
Clint Gorton
AD MNGR.
YiFeng Lin
BUSINESS MNGR.
Max McCoy
ADVISER

Theatre Department presents 'It's A Wonderful Life'

■ **JOSH JOHNSON**
STAFF WRITER



Emporia State Theatre presents the holiday classic "It's A Wonderful Life" as a live radio production in Bruder Theatre continuing through Saturday. Tickets can be purchased at the ID office in the Memorial Union for \$5 with a student ID.

"Watching the film has been a tradition for many American families for about the past 30 or 40 years," said Jim Bartruff, professor of theater and director of ESU theatre. "Our production is a radio adaptation, which means that it isn't performed in the traditional manner in which actors perform scenes in front of sets with memorized lines, but rather as a radio show with live sound effects and characters reading lines from scripts with mics behind music stands."

The story of the production follows the life journey of the character George Bailey and what his life means to those around him.

"This show will tap into the nostalgia of the story," Bartruff said. "The nostalgia of radio will also be there and some of the audience will experience the play in a new way."

The original "It's a Wonderful Life" was released in 1946 to poor commercial success but received five academy award nominations, according to a press release for the ESU production.

"The film became popular thanks in part to late night television," Bartruff said. "It is one of the iconic performances of Jimmy Stewart where he was the original George Bailey."

ESU's production helps the audience appreciate the "Golden Age of Radio," Bartruff said.

"You'll be seeing the intricacies of how live radio was done in the 'Golden Age of Radio,'" Bartruff said. "That was the era between vaudeville and network television when radio brought all sorts of entertainment into American homes. There were the same kinds of programming that we take for granted as television shows today."

The actors involved in the show utilize different skills than in other productions due to the nature of it being a radio show. Herb Wyrick, adjunct professor of communication and theater, has helped the actors hone their voice acting skills.

"The biggest difference is that it's all in your voice for this show," said Casey McCabe, sophomore theatre major and provider of several extra voices in the production. "There's very little movement, so you have to portray all the emotion with your voice. It's something I've never done, and it's been a lot of fun trying something new."

Sound effects, which were essential in the "Golden Age of Radio," are an important part of the production and will be

performed on stage similar to the voice acting.

"I'm a Foley artist, so I make sound effects for the show," said Jen Newell, junior communication major. "This show is so different because it requires the audience to use their imagination more. It's easier in regular shows to understand what is happening, but in this show the audiences hears the characters then imagines their movements with each other."

The members of the cast and crew hope that the show will attract all age groups, Newell said.

"I think it's a unique show, since it applies to both younger and older generations," Newell said. "It'll be really interesting to see it acted out on stage."

Ask Ashley



QUESTION:

Dear Ashley,

I'm anorexic. While having sex with one of my boyfriends, I realized that I am drier than I should be. Does this have anything to do with my eating disorder?

Sincerely,
Dry as a Bone

ANSWER:

Dear Parched,

While your vaginal dryness may actually be a result of your anorexia, I think you have bigger problems to worry about.

When I first heard this question over our new handy dandy messaging system (you all should call in with your questions, 620-341-5469), my reaction was "Does this happen with all of her boyfriends or just this particular one?"

If it is only happening with this one boyfriend there could be several factors that are contributing to your arid crevice. The first is obvious, lack of foreplay. I know foreplay is really downed on in movies and on TV but it is pretty important part of sex for most women.

According to Women to Women, dryness can also be a sign that there are unresolved emotional issues in a relationship. So if this boyfriend knows anything about the others, this could be your issue.

However, vaginal dryness is most commonly caused from low estrogen levels. This lack of estrogen can cause the vaginal wall to thin and inflame, most commonly referred to as vaginal atrophy. This usually happens to women between the ages of 40-55 during menopause according to the Mayo Clinic. But vaginal atrophy can also occur in women who are anorexic.

Some natural ways to cure vaginal dryness include drinking more water, upping you nutrient intake, getting a good lube or asking your doctor about how to boost estrogen levels.

QUESTION:

Dear Ashley,

Are black guys really bigger?

Sincerely,
Curious

ANSWER:

Dear Curious,

Honestly, this is a hard question to answer. After what I consider some pretty extensive research, I have found people on both sides on the argument.

According to several studies, most notably a Masters and Johnson study, black men, on average, do have longer penises than white men, but only when flaccid. In all actuality, it is only by about .1 inches.

So when it comes down to it, the penis, even if longer while limp may not gain much length when erect making the penis size about the same across ethnic lines.

Although, the longest penis on record to date was a black man's, 17.7."

Have a dating relationship or sex question for Ashley? Contact her at entertainment@esubulletin.com or 620-341-5469.

Mentalist duo and Late Night kick off finals week

■ **ASHLEY PEACHES**
MANAGING EDITOR

Union Activities Council will end the semester with Late Night and The Evasons, a mentalist duo, starting at 8 p.m. Dec. 14 in Webb Lecture Hall, upstairs in the Memorial Union.

"Late Night is kind of a tradition," said Christian Holt, sophomore elementary education major and UAC featured events vice chair. "(UAC) does it every year. It's always during finals week and it's the only event that can happen during finals week. It's kicking off finals week and just trying to get everyone to relax."

The Evasons are a mentalist duo. "They read peoples minds and they put on a great show for everybody," said Liana Farnen, junior elementary education major and featured events chair. "They do predictions and interact with the crowd a lot."

The act requires a lot of crowd participation.

"It's an interactive audience, mind reading and ESP show," said Jeff Evason, one-half of The Evason act. "In our performance is an actual spirit séance. We will bring somebody up on stage and you will see their reactions. It's really something that people will remember."

The Evasons have performed around the world for a wide range of

audiences, including royalty.

"We've performed in 37 countries around the world," Evason said. "Most recently we performed in the Middle East."

The performance is not magic. "It is not a magic show at all, but it is magical," Evason said. "It is something of that realm, of the impossible."

Evason said that performance will be something that people have never seen before.

"People can expect a show that will leave them thinking for a long time," Evason said. "People will walk away with something they will remember for a long long time. When we come to the climax it will be calm. It's very common, in fact it will be uncommon for people to not run out of the room. It's a mind blowing show."

The "late night" portion of the evening will consist of prize giveaways, games and carnival style food.

"All students are invited," Farnen said. "Before the show, people can come and mingle. It's a carnival theme, so there will be a smorgasbord. There will be corn dogs and funnel cake and soda."

While the show is free, attendees can get tickets to enter to win prizes by bringing non-perishable food items. Prizes include an Ipod, a 22-inch television, a futon and a mountain bike, among other things. There is no limit



Jeff and Tessa Evason will be showing off their telepathy and extra sensory perception powers Tuesday, Dec. 14 at 9 p.m. in Webb Lecture Hall in the Memorial Union. www.evason.com

on the amount of tickets a person can get to enter the prize drawings.

"You get one automatic ticket just for coming," Holt said. "You take those tickets and you put them in for whatever prize you want. There's no

limit. The more cans you bring, the more tickets you get, the more chances you get for prizes."

One canned good is worth one prize ticket. The goods will be donated to the local food pantry, DECCA.

Sudoku

3	6		8	7		9	1	
1					6		5	
		4			9			6
4				3		2		1
		9		4		6		
2		6	5	8				7
8			2			1		
	4		9					2
	2	1		8	4		6	3

	6		1		3	5		
		1	6			9		
2				5				1
		6		8				
	4						9	
			5			3		
9				2				6
		4			5	8		
		5	4		7		2	

Greek mortgages held by ESU Foundation:

\$1,169,500

Residents	
Alpha Sigma Alpha	38
Chi Omega	30
Kappa Sigma	14
Phi Delta Theta	13
Sigma Phi Epsilon	11
Total	106



Chi Omega
\$826,500



Phi Delta Theta
\$135,000



Alpha Sigma Alpha
\$88,000



Kappa Sigma
\$40,000



Sigma Phi Epsilon
\$80,000

Infographic by: **Kelsey Wright**

*Sources: Lyon County Register of Deeds, Treasurer, and Appraiser; the fraternities and sororities

Report...from page 1

to the donor because the donations would be viewed by the (Internal Revenue Service) as being for non-educational purposes. At the September 12, 2008, meeting of the Executive Committee of the Foundation, the decision was made to stop accepting non-educational donations. It is recommended that the foundation consider seeking a written tax opinion regarding any possible tax liability on the part of the foundation for this past activity."

The mortgages were recorded from 2001 to 2008, according to the Lyon County Register of Deeds.

"If there are Greek houses in arrears, right now it is a private foundation issue that's being addressed by the trustees," Heasley said. "Our finance committee and our foundation executive committee are going to be discussing what to do."

According to documents gathered at the Lyon County Court House, The Bulletin found the following:

- Chi Omega contracted its mortgage in 2001. The current mortgage amount is the highest of the Greek houses at \$826,500 and has an appraised value by the county of \$798,900.
- The mortgage value for Phi Delta Theta is currently \$135,000 and was contracted in 2008 as the most recent mortgage of the Foundation, signed by Heasley. The county's appraised value for tax of this property is \$384,080.
- Alpha Sigma Alpha, which contracted a mortgage from the Foundation in 2002 holds a current balance of \$88,000, and has an appraised value by the county of \$287,300.
- Sigma Phi Epsilon contracted a mortgage in 2005 and has a current balance of \$80,000 and has been appraised by the county for \$143,920.
- Contracted in 2004, Kappa Sigma holds the least amount of mortgage at \$40,000. Its property appraisal value by the county is \$384,080.

Heasley said the foundation monitors the current mort-

gages and has sold others as opportunities have arisen.

"We work with each house and we watch the mortgages regularly," Heasley said. "We try to work with them as much as possible and try and be transparent with them. We do let them know if they're late."

Michael Lane, ESU president, told the regents at the Nov. 19 meeting that he viewed the problem as a housing issue.

"That's student housing," Lane said at the KBOR meeting on Nov. 19. "So the foundation would foreclose on that and dump a bunch of students on the street and I think our foundation has been very appropriate and will be gentle in handling that."

BKD, formerly Baird, and Kurtz & Dobson, an accounting and advisory firm with headquarters in Springfield, Mo. performed the management review. In addition to the mortgages, the review also evaluated financial transactions, their documentation and relationships between ESU and affiliated corporations. They found that overall, Lane's leadership has the university "poised for growth."

SHC...from page 1

von, junior nursing major and member of NKANS. "Passing out condoms today encourages people to use them and not be shy about them. A lot of people are shy about going out and purchasing condoms. If we have them available it will be easier for them."

AIDS, or Acquired Immune Deficiency Syndrome, is a life threatening disease that is caused by HIV, or the Human Immunodeficiency Virus.

"HIV is a problem everywhere," McDaniel said. "There is nowhere where it is not a problem. There are certainly some places where it has caused more impact than others, but it is a problem everywhere."

HIV causes the immune system to break down by destroying white blood cells, called T cells, according to the Center for Disease Control.

"We want to make sure that people still are aware, at least once a year, that even though it may not at this moment be affecting you, worldwide it's affecting millions, women, children, men," McDaniel said. "We just want to bring that little bit of awareness back to peoples minds."

AIDS is the final stage of HIV but it can take several years for an infected person to reach this stage. It is characterized by a certain number of infections, certain types of cancers or a very low number of T cells according to the CDC.

"(We want to) make the statistics known," Akpovona said, "about how prevalent AIDS is, not just in Africa but also in the United States."

According to the World Health Organization, 33.4 million people are living with HIV/AIDS worldwide. Of those, 1.2 million persons are living in the United States and 56,000 people are newly infected with HIV each year according to the U.S. Department of Health and Human Services. Nearly 21 percent of HIV positive people do not know that they are infected.

"(This day) is awareness," McDaniel said. "It's important for people to realize the impact globally that HIV has had. We are kind of insulated here in rural America and there are so many other things making headlines, H1N1. We're not talking about HIV/AIDS very much. Or as much as we did in the '90s. When you stop hearing about something, it's natural to assume that it is not a problem."

WORLD AIDS DAY

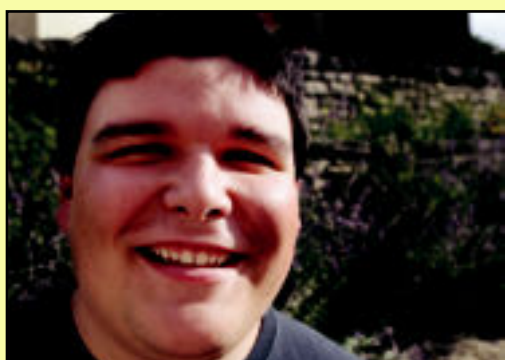
2009



EMPORIA STATE UNIVERSITY SPORTS

In review: Fall Sports

The winter chill is in the air, which signals the end of the fall sports season. Emporia State fans had something to talk about throughout the autumn months as the volleyball enjoyed plenty of successes, while the football team, hampered by injuries, fell well short of their goals. The culmination of the fall sports season leads the fans into the winter sports season, where the Hornets men's and women's basketball teams look to upend the competition similarly to a season ago.



SHANE WILSON
SPORTS EDITOR

With the semester coming to a halt, I felt it important to take some time to talk about a couple of fall sports teams' seasons.

Let's start with football. It's hard for me to look at the body of work the football team produced and be satisfied with the end result. A 2-9 season never looks impressive now matter how you spin it. Granted, there were a select few glimmers of hope – the season-opener win versus Southwestern Oklahoma State saw a young, invigorated team achieve early success and excite a naïve fanbase, and that nail-biter game against Central Missouri looked to send the Hornets on their way to a productive season, win or lose... or so one thought.

With the quarterback situation ESU dealt with this year, it's really no wonder why the team faced so much adversity. I can't imagine how any sort of chemistry was created with the offensive line having to listen to a different signal caller every other game, let alone how the team was supposed to have any semblance of an offensive rhythm.

But hey, sometimes that's how things work in football – a player goes down and the next guy in line comes in, trying to make chicken salad out of chicken... well you get the picture.

I'm one of those few with high hopes for the football team next year. The younger players will greatly benefit from another year in the program, and although the team is losing a few key players, I'm sure Higgins is doing a heck of a job recruiting as we speak. Senior Danny McEvoy said that Higgins is the best recruiter he's ever seen.

I'll take his word for it.

On to volleyball. The team, riding high off their MIAA Championship from a season ago, didn't fair as well this year. I know what you're thinking: how can a team that finishes with a record of 29-5 not have done so hot? A simple answer. This team had the potential to do incredible things, things way beyond their second place finish in the MIAA and the first round loss of regional competition.

As far as the players themselves go, there were a few surprises. I'll be frank – junior Ting Liu had an off year. She just didn't seem to be the same setter she was a year ago when she garnered First Team All-MIAA and All-American honors. Fortunately for her and the rest of the team, Liu will have another year to prove her worth on the volleyball court.

On a different note, senior Arica Shepard was flat out amazing. Shepard will leave Emporia State as the school's record holder in career kills, kills per set average, attempts, 20-plus kills matches and double-figure kill matches, along with being fourth all-time in digs. She also earned Third Team All-American honors in 2008 and was named Second Team All-American this year. A player like Shepard is one who will be remembered at White Auditorium for years to come.

A disappointing season aside, there were some highlights that showed some really encouraging things for the future of the program. Freshman Katelyn Schmidtberger showed flashes of great play here and there, and with a little time, will most likely become a solid contributor and leader for the team down the road. Another freshman, Caitlyn Murray, added some excellent minutes for the Hornets throughout the year and will see her playing time jump significantly in the coming years.

It was an interesting fall sports season, to say the least. There were a few ups and a few too many downs than I'd prefer. From a sports writer's perspective, it's easy to write about a winning team doing just that – winning game after game. But it's when a team faces uncertain trials and tribulations that challenge us to search for positives in an environment full of the opposite.



Clockwise from top: 1. Danny McEvoy struggles for possession against an UNO defender Oct. 3 at Welch Stadium. The Hornet football team finished 2-9. Kellen Jenkins/The Bulletin **2.** Middle Hitter Katelyn Kaiser and Setter Katelyn Schmidtberger jump to block a spike by Washburn Oct. 16 at White Auditorium. The Hornet Volleyball team finished 29-5. Kellen Jenkins/The Bulletin **3.** The ESU men lead the race during the ESU Invitational Oct. 2 at Jones Park in Emporia. The men finished first in the meet and the women second. Jonathan Elliott/The Bulletin

Men's Basketball

Dec. 5	@ Missouri Western
Dec. 9	vs. Newman
Dec. 12	vs. Central Missouri
Dec. 19	vs. Ottawa
Dec. 28	vs. Truman
Dec. 31	@ Nebraska-Omaha
Jan. 2	@ Southwest Baptist
Jan. 6	@ Missouri Southern
Jan. 9	vs. Pittsburg State

Women's Basketball

Dec. 5	@ Missouri Western
Dec. 12	vs. Central Missouri
Dec. 21	@ CSU-East Bay
Dec. 22	@ San Francisco State
Dec. 28	vs. Truman
Dec. 31	@ Nebraska-Omaha
Jan. 2	@ Southwest Baptist
Jan. 6	@ Missouri Southern
Jan. 9	vs. Pittsburg State